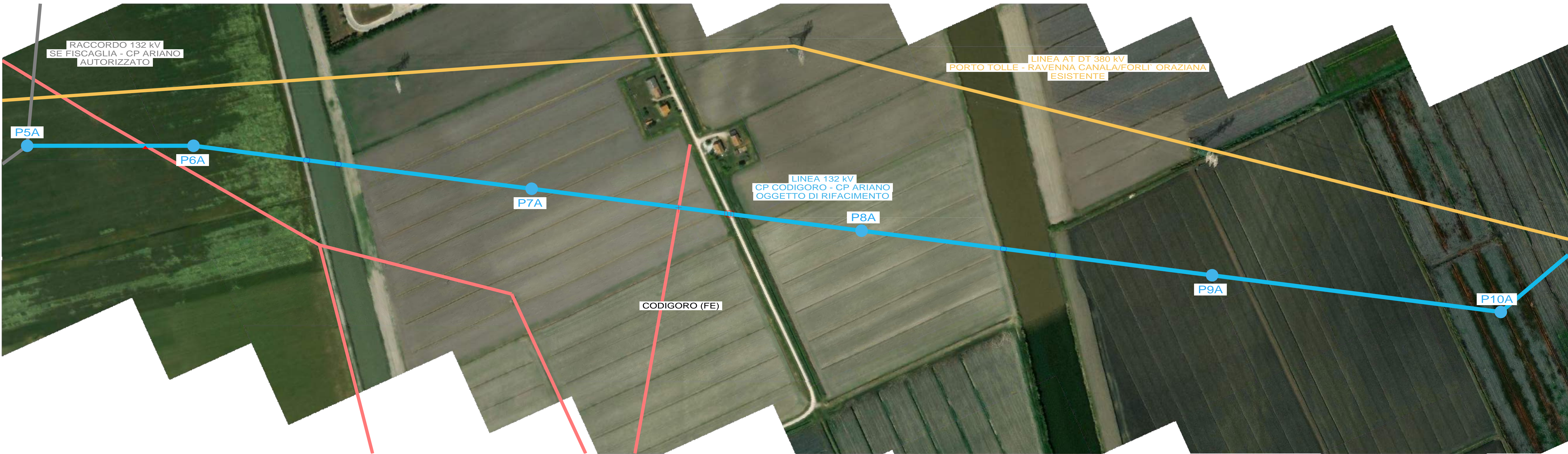




*Luca Brulli*

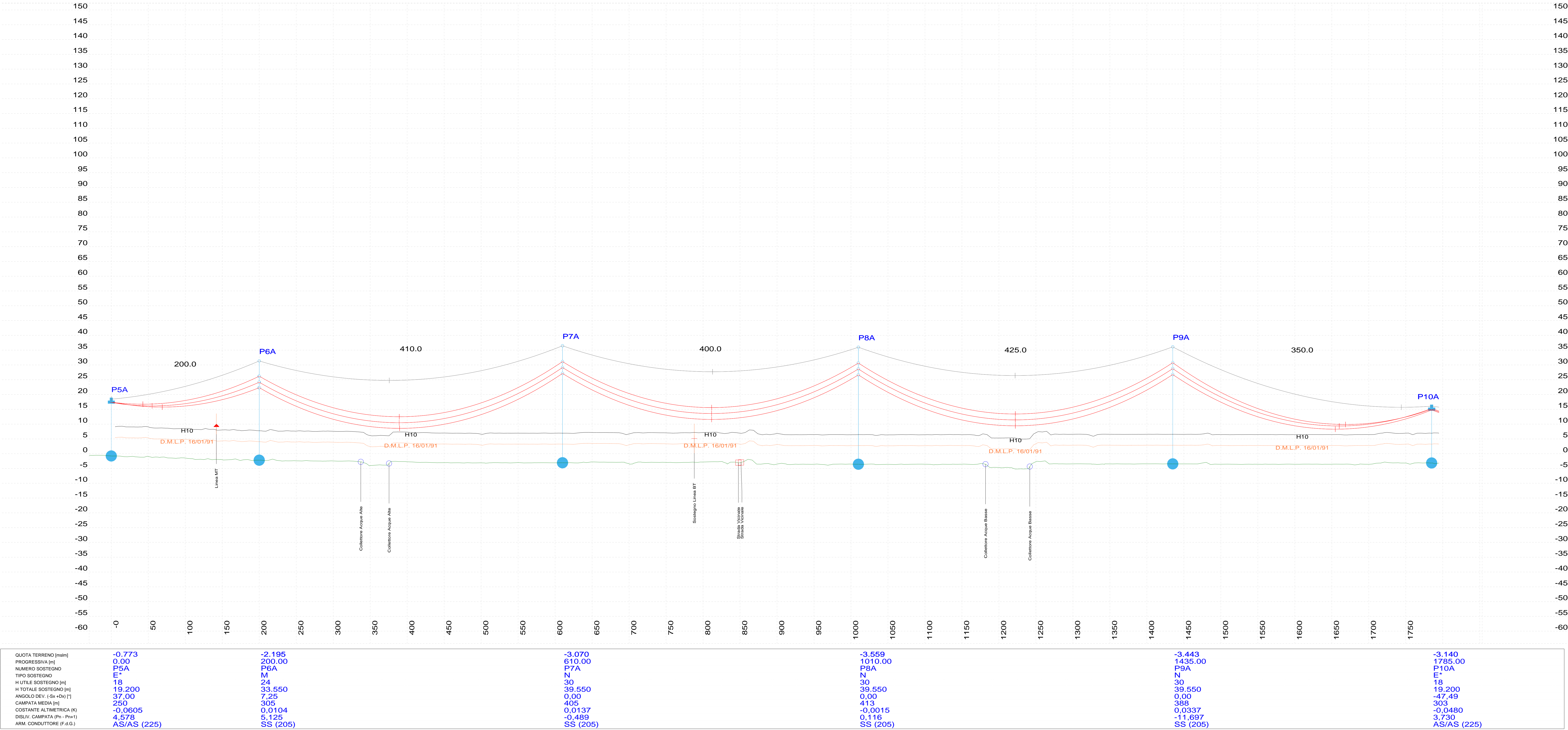
		<i>Vignoli</i>	<i>Ben</i>	<i>Brulli</i>	
A	21.11.2025	097	013	093	Emissione per studio di prefattibilità
REVISIONE	DATA	ELABORATO	VERIFICATO	APPROVATO	DESCRIZIONE
CODICE PRATICA C.P. 202201881 (e-distribuzione)					TIPOLOGIA IMPIANTO / POTENZA IN IMMISSIONE CP GRILLARA POTENZA IN IMMISSIONE ED IN PRELIEVO 33 MW
PROPONENTE ARIAN SOLAR Srl Piazza San Sepolcro, 1 20123 - Milano (MI)					IMPIANTO POTENZIAMENTO LINEA 132 kV CODIGORO - ARIANO
INGEGNERIA & COSTRUZIONI BRULLI trasmissione					TITOLO PROFILO PRELIMINARE
SCALA -	FORMATO A0	FOGLIO / DI 0 / 7		N. DOCUMENTO 5 1 0 8 7 9 A	





P5A - P10A, OPGW 11,5, Displayed MPB Load 11503 (N), Tension as % of Ultimate 13 (%UL)  
P10A - P11A, OPGW 11,5, Displayed MPB Load 12868 (N), Tension as % of Ultimate 13 (%UL)  
P5A - P10A, ACSR 31,5 , Displayed MF75 Load 25092 (N), Tension as % of Ultimate 18 (%UL)  
P10A - P11A, ACSR 31,5 , Displayed MF75 Load 21812 (N), Tension as % of Ultimate 18 (%UL)

20.0 m Horiz. Scale  
5.0 m Vert. Scale

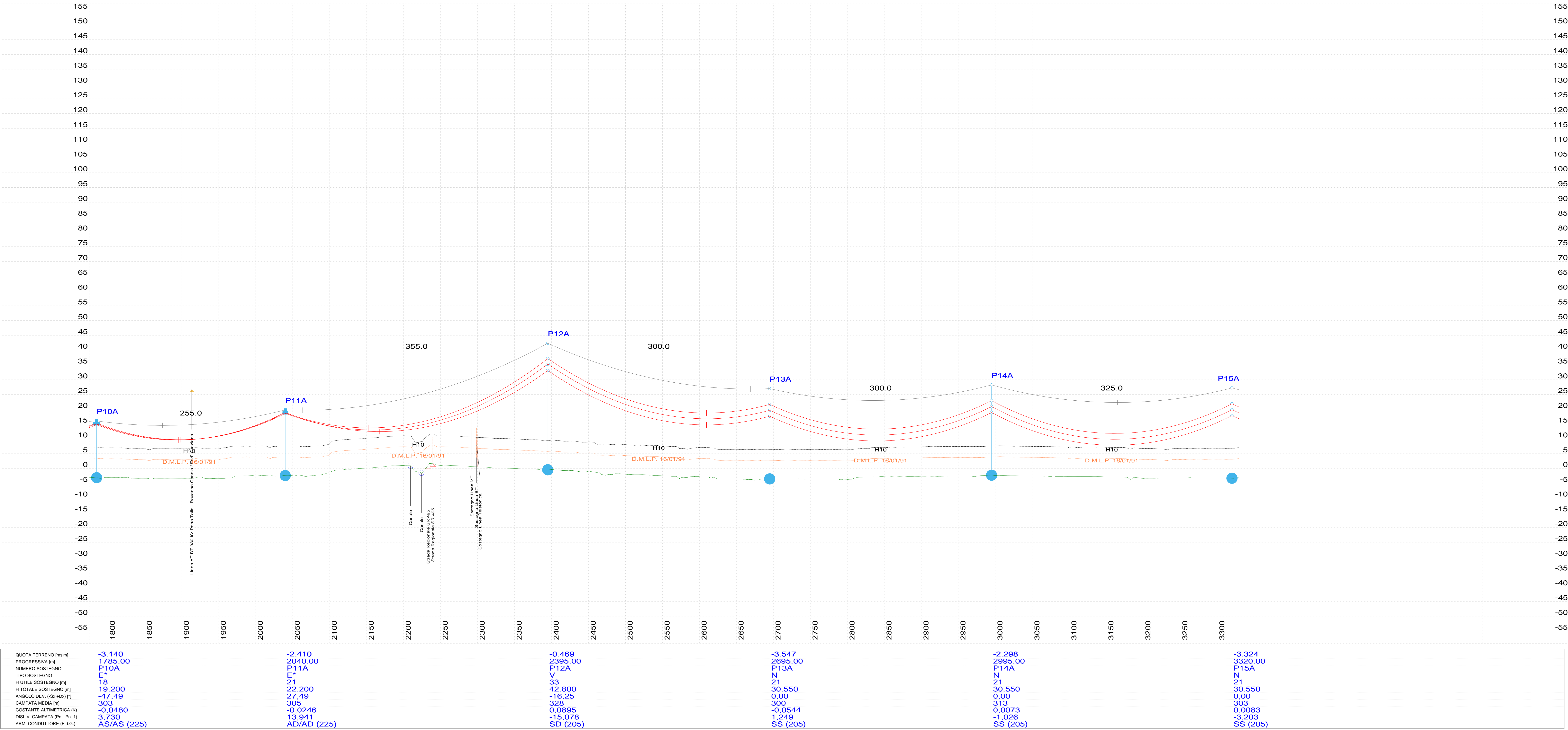




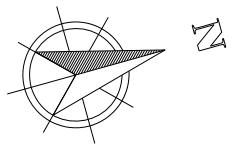


P5A - P10A, OPGW 11,5, Displayed MPB Load 11503 (N), Tension as % of Ultimate 13 (%UL)  
P10A - P11A, OPGW 11,5, Displayed MPB Load 12868 (N), Tension as % of Ultimate 13 (%UL)  
P11A - P27A, OPGW 11,5, Displayed MPB Load 11921 (N), Tension as % of Ultimate 13 (%UL)  
P5A - P10A, ACSR 31,5, Displayed MF75 Load 25092 (N), Tension as % of Ultimate 18 (%UL)  
P10A - P11A, ACSR 31,5, Displayed MF75 Load 21812 (N), Tension as % of Ultimate 18 (%UL)  
P11A - P27A, ACSR 31,5, Displayed MF75 Load 24042 (N), Tension as % of Ultimate 18 (%UL)

20.0 m Horiz. Scale  
5.0 m Vert. Scale

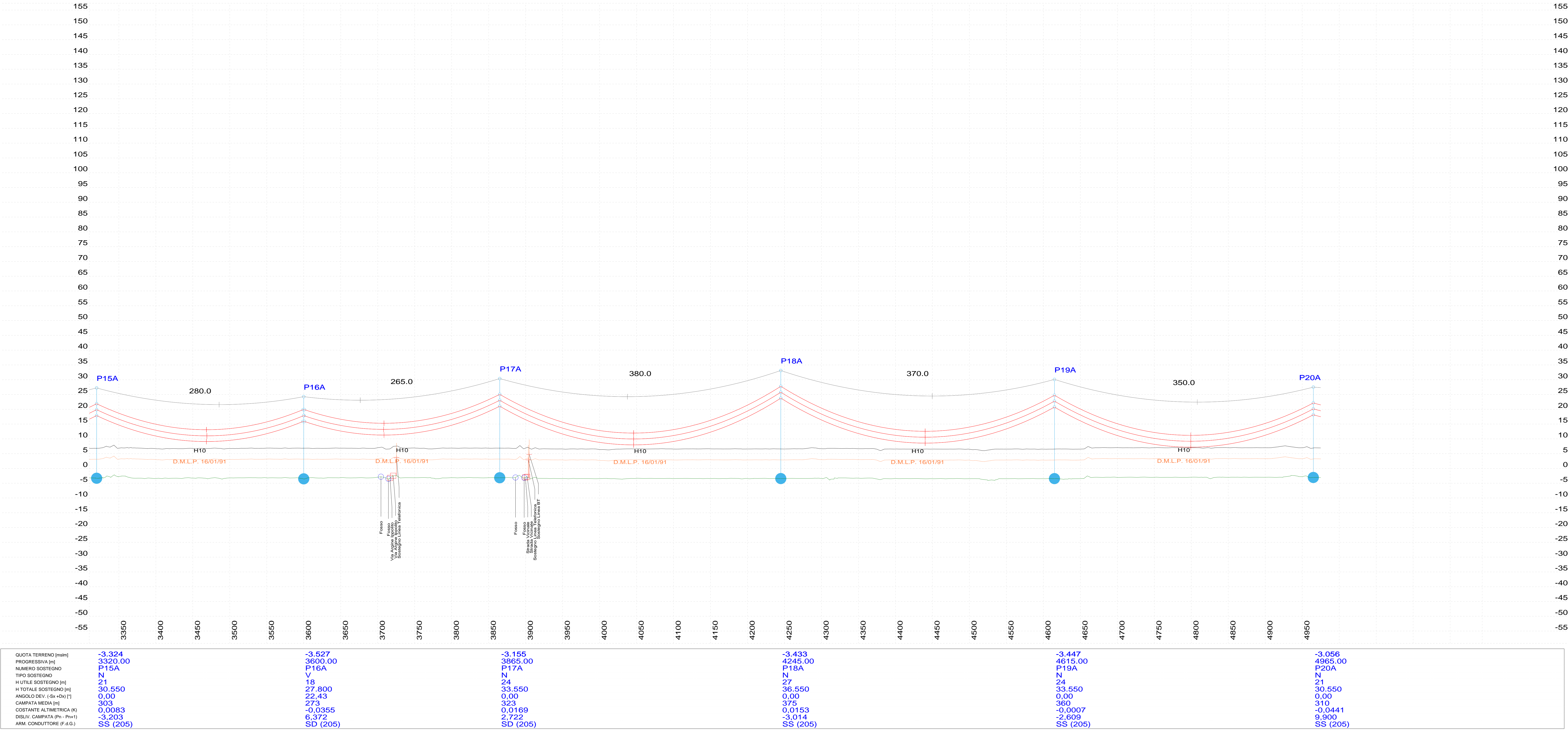




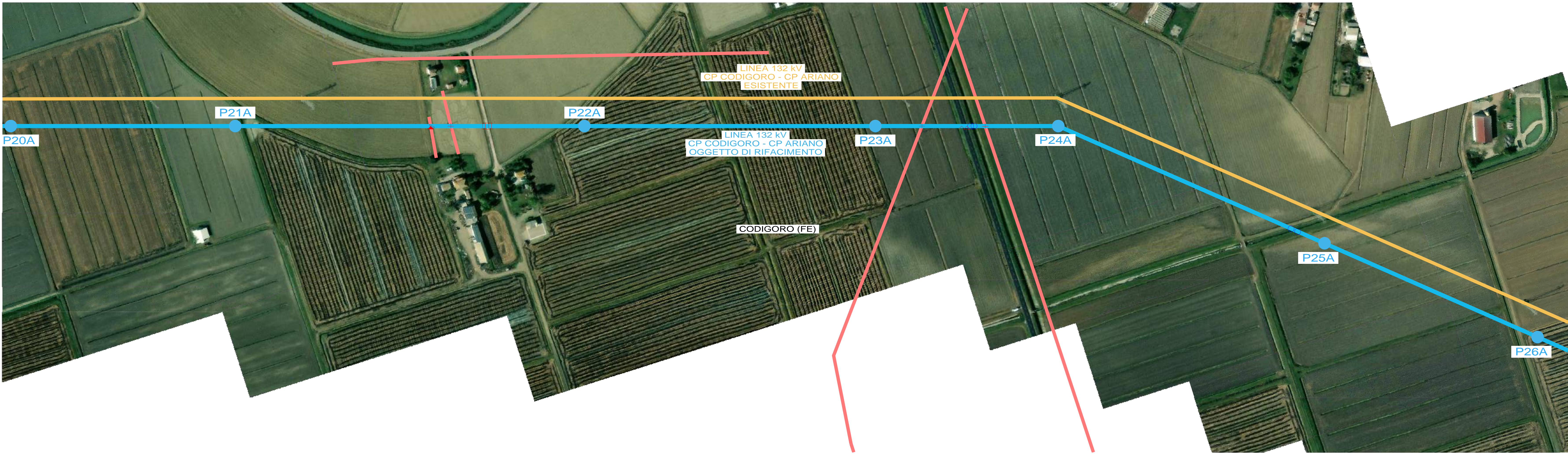


P11A - P27A, OPGW 11,5, Displayed MPB Load 11921 (N), Tension as % of Ultimate 13 (%UL)  
P11A - P27A, ACSR 31,5 , Displayed MF75 Load 24042 (N), Tension as % of Ultimate 18 (%UL)

20.0 m Horiz. Scale  
5.0 m Vert. Scale

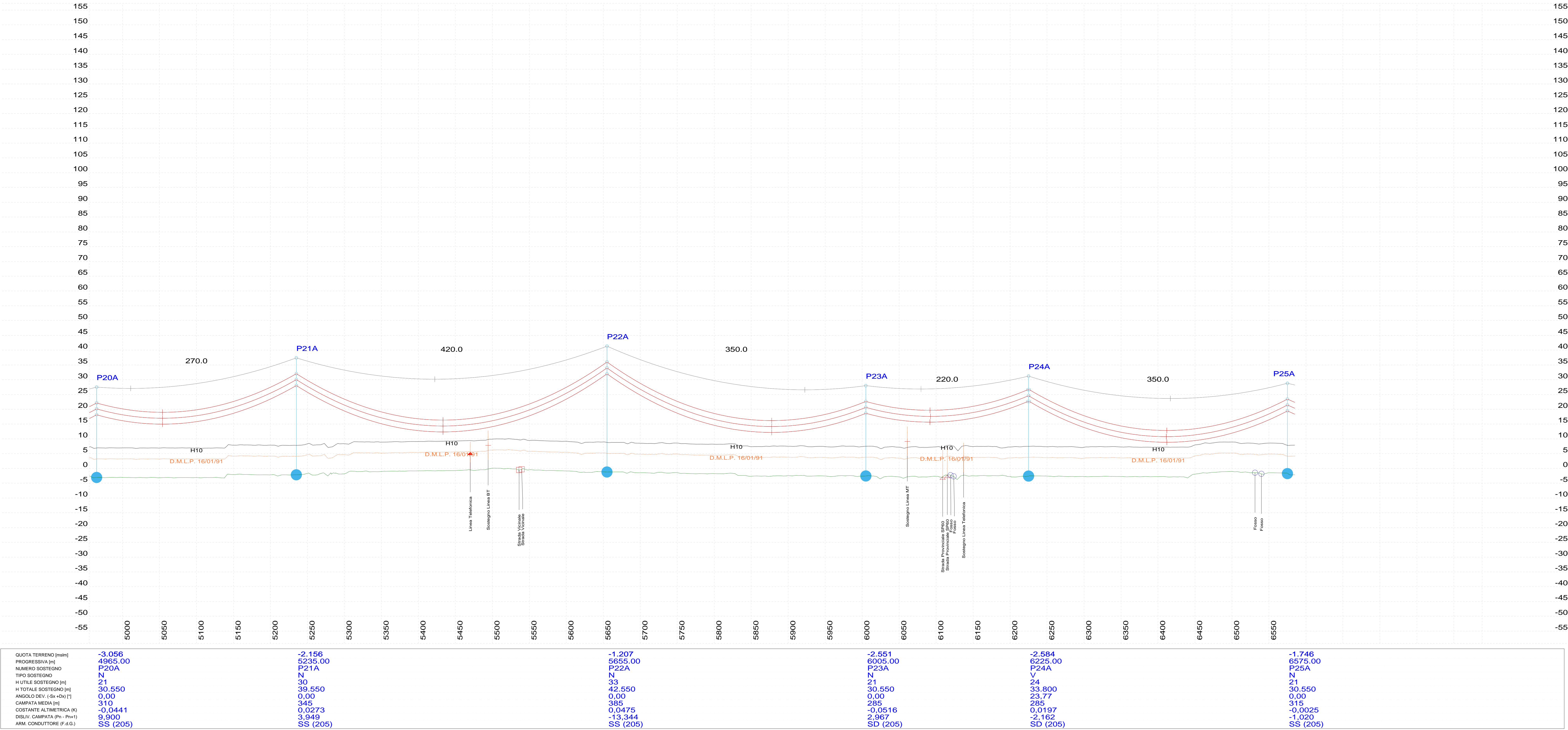




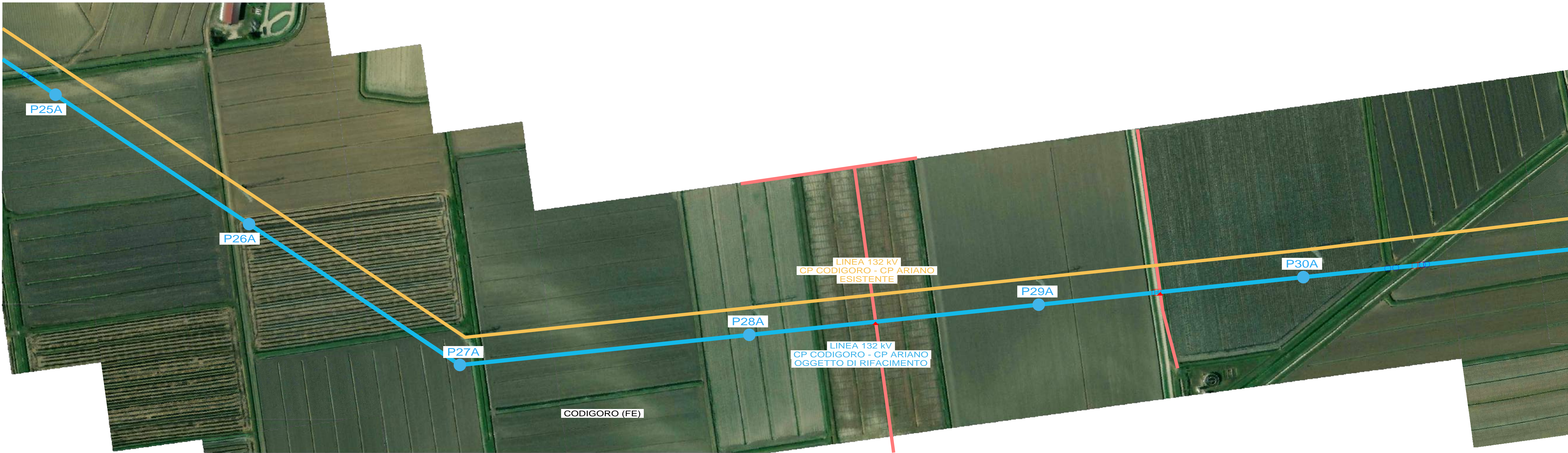


P11A - P27A, OPGW 11,5, Displayed MPB Load 11921 (N), Tension as % of Ultimate 13 (%UL)  
P11A - P27A, ACSR 31,5, Displayed MF75 Load 24042 (N), Tension as % of Ultimate 18 (%UL)

20.0 m Horiz. Scale  
5.0 m Vert. Scale

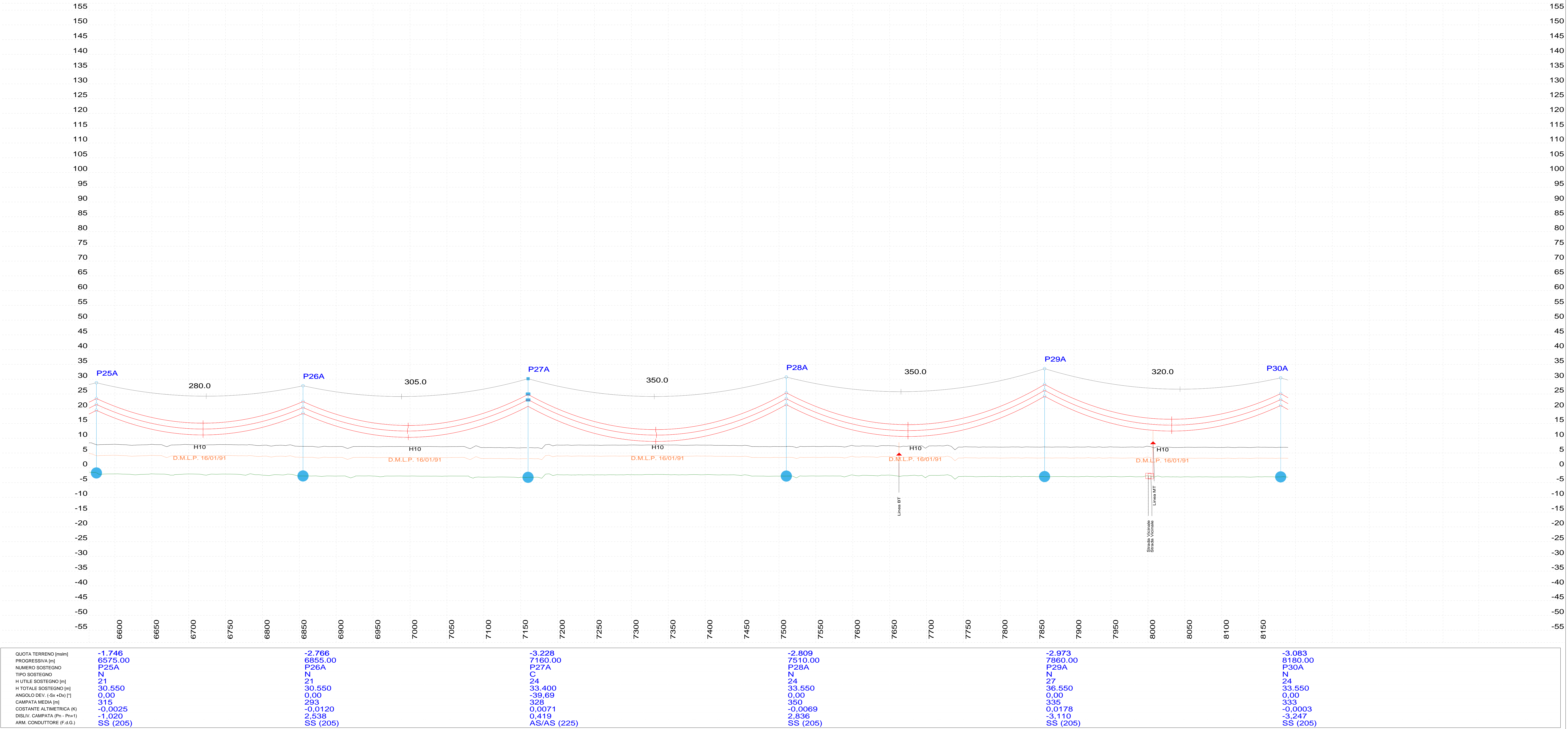




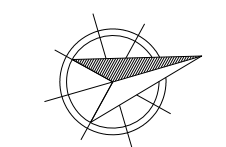


P11A - P27A, OPGW 11,5, Displayed MPB Load 11921 (N), Tension as % of Ultimate 13 (%UL)  
P27A - P38A, OPGW 11,5, Displayed MPB Load 11893 (N), Tension as % of Ultimate 13 (%UL)  
P11A - P27A, ACSR 31,5, Displayed MF75 Load 24042 (N), Tension as % of Ultimate 18 (%UL)  
P27A - P38A, ACSR 31,5, Displayed MF75 Load 24118 (N), Tension as % of Ultimate 18 (%UL)

20.0 m Horiz. Scale  
5.0 m Vert. Scale

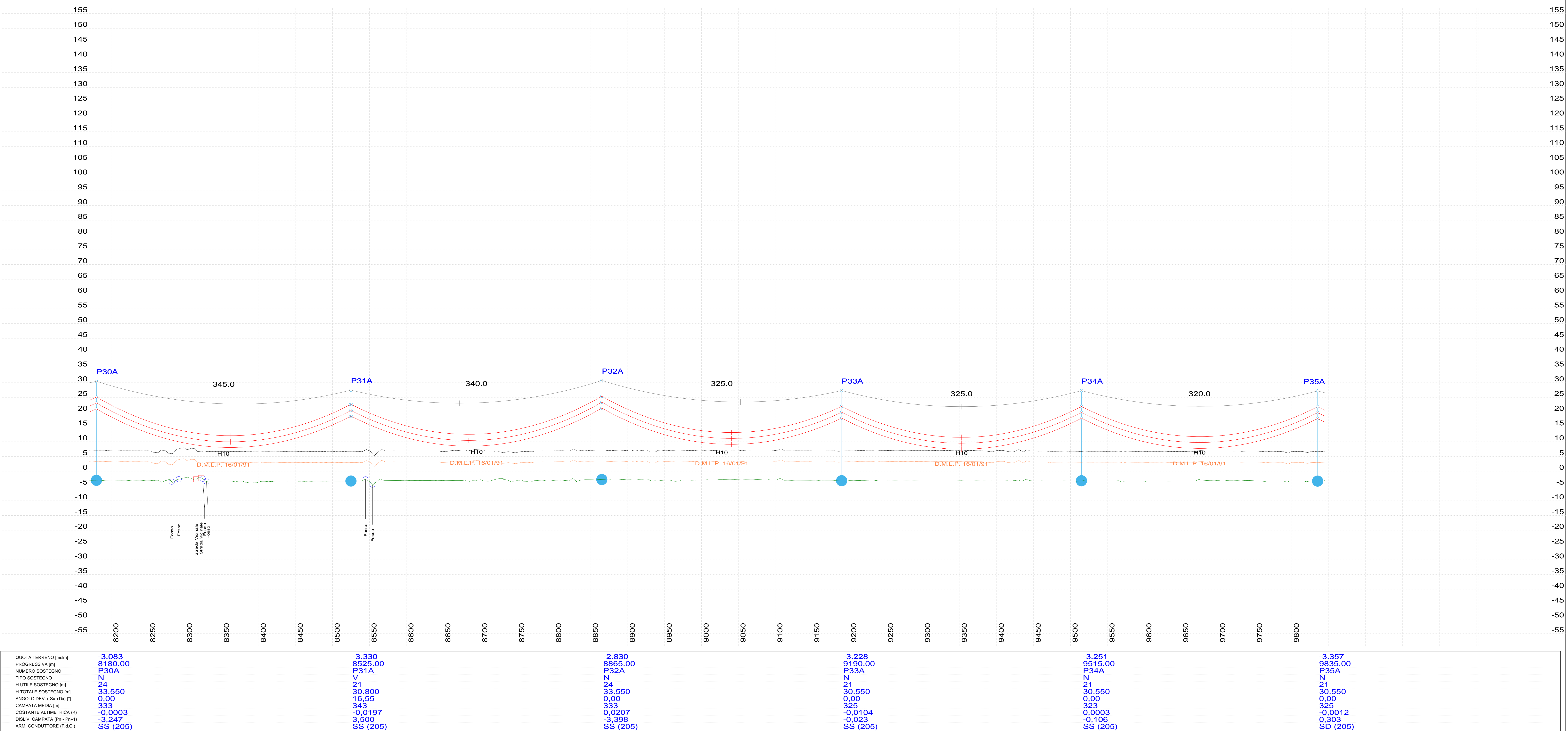




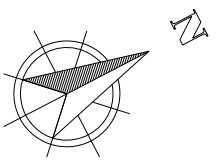


20.0 m Horiz. Scale

5.0 m Vert. Scale







P27A - P38A, OPGW 11.5, Displayed MPB Load 11893 (N), Tension as % of Ultimate 13 (%UL)  
P38A - PG-ARI, OPGW 11.5, Displayed MPB Load 15636 (N), Tension as % of Ultimate 13 (%UL)  
P27A - P38A, ACSR 31.5 , Displayed MF75 Load 24118 (N), Tension as % of Ultimate 18 (%UL)  
P38A - PG-ARI, ACSR 31,5 , Displayed MF75 Load 13817 (N), Tension as % of Ultimate 18 (%UL)

20.0 m Horiz. Scale  
5.0 m Vert. Scale

